

SĂ-L LĂUDĂM

Flighorn 2.

Arr. Traian Otlăcan

Maestoso

Nr. 2 Andante

Nr. 3. Maestoso Solo Fligh. 1.

Nr. 4. Vioi

f

p

mp

mf

Orchestra

SĂ-L LĂUDĂM

Flaut Do 1.

Arr. Traian Otlăcan

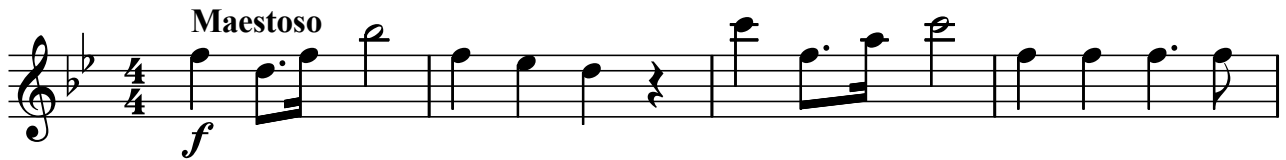
Maestoso
f

SĂ-L LĂUDĂM

Flaut Do 2.

Arr. Traian Otlăcan

Maestoso



f

Nr. 2. Andante



p



Nr. 3. Maestoso Solo Fligh. 1.



mp

Toti



Nr. 4. Vioi



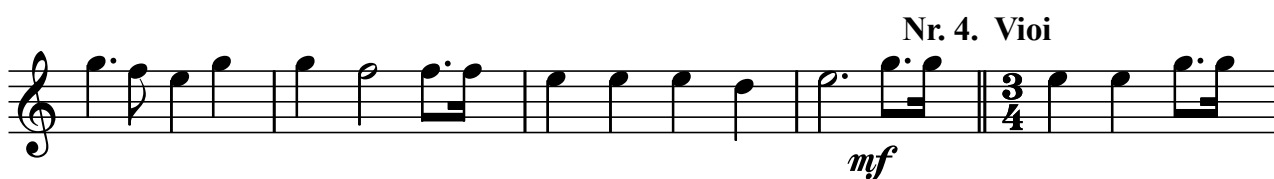
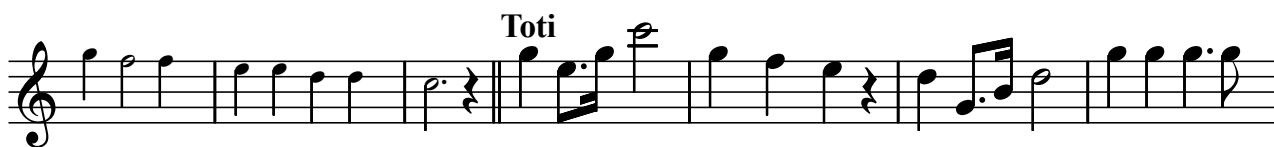
mf



SĂ-L LĂUDĂM

Clarinet 1.Bb
Maestoso

Arr. Traian Otlăcan



SĂ-L LĂUDĂM

Clarinet 2.Bb

Arr. Traian Otlăcan

Maestoso



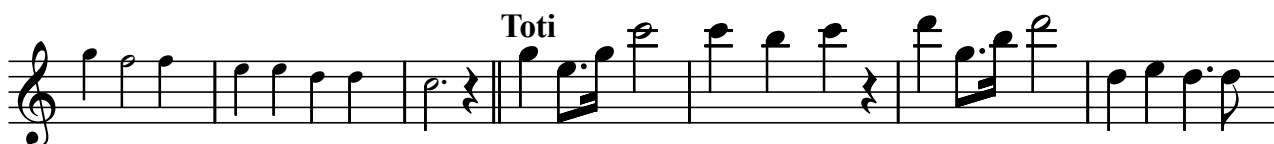
Nr. 2. Andante



Nr. 3. Maestoso Fligh.



Toti



Nr. 4. Vioi



SĂ-L LĂUDĂM

Saxafon Eb

Arr. Traian Otlăcan

Maestoso

f

Nr. 2. Andante

mp

Nr. 3. Maestoso Fligh. 1.

mp

Toti

mf

Nr. 4. Vioi

mf

SĂ-L LĂUDĂM

Basflighorn

Arr. Traian Otlăcan

Maestoso



f

Nr. 2. Andante

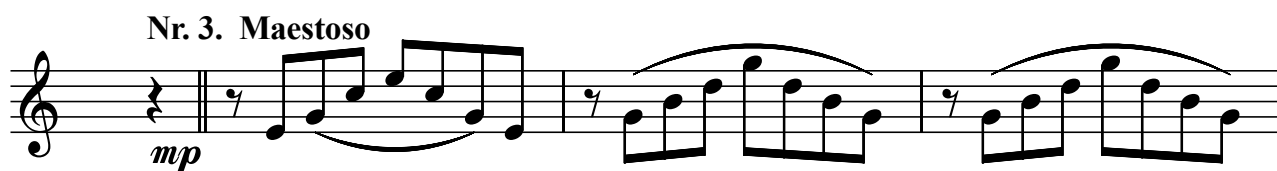


p

Toti



Nr. 3. Maestoso



mp



mf



Nr. 4. Vioi



mf



SĂ-L LĂUDĂM

Euphonium

Arr. Traian Otlăcan

Maestoso



Nr. 2. Andante Fligh.



Toti



Nr. 3. Maestoso



mf



Nr. 4. Vioi



SĂ-L IĂUDĂM

Bass Bb

Arr. Traian Otlăcan

Maestoso

Nr. 2. Andante Fligh.

Bass

Nr. 3. Maestoso

Nr. 4. Vioi

f

p

mp

mf

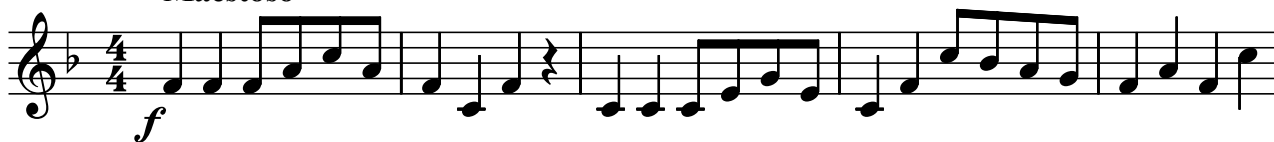
Orchestra

SĂ-L LĂUDĂM

Bass Fa

Arr. Traian Otlăcan

Maestoso



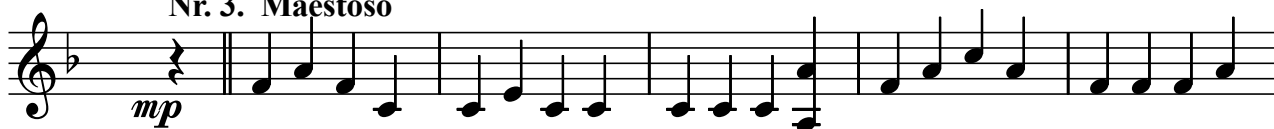
Nr. 2. Andante Fligh.



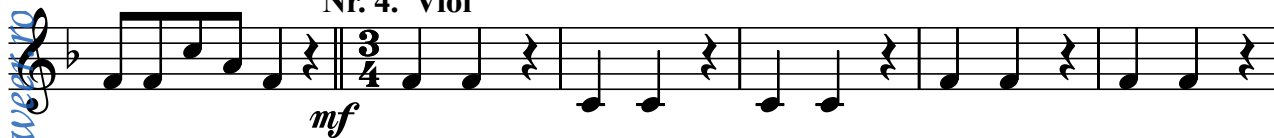
Bass



Nr. 3. Maestoso



Nr. 4. Vioi

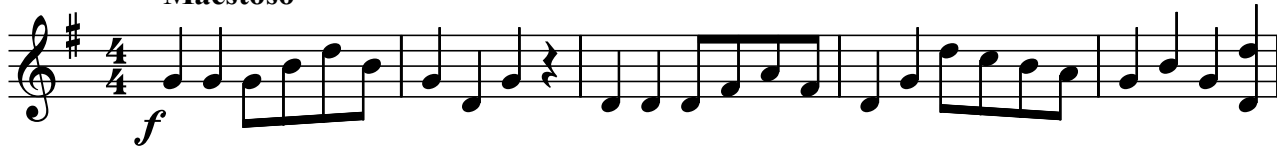


SĂ-L LĂUDĂM

Bass Eb

Arr. Traian Otlăcan

Maestoso



Nr. 2. Andante Fligh.



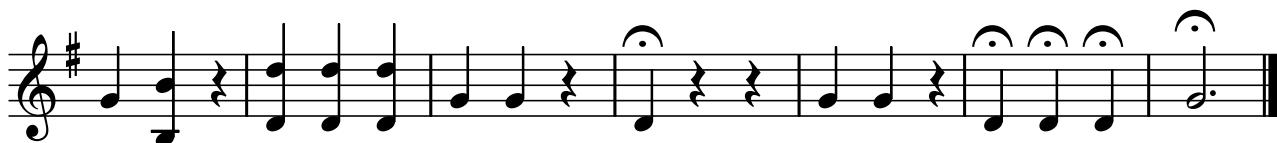
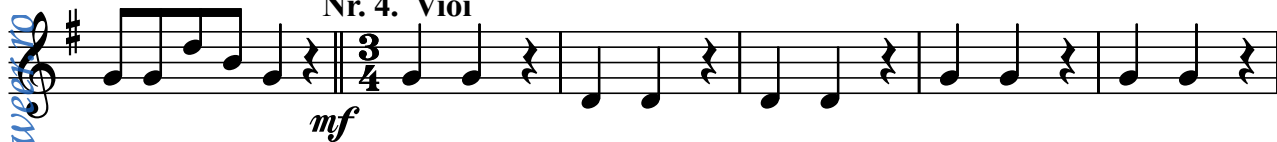
Bass



Nr. 3. Maestoso



Nr. 4. Vioi



SĂ-L LĂUDĂM

Trombon 1.

Arr. Traian Otlăcan

Maestoso

Nr. 2. Andante
mp

Toti

Nr. 3. Maestoso
mp

Toti

Nr. 4. Vioi
mf

SĂ-L LĂUDĂM

Trombon 2.

Arr. Traian Otlăcan

Maestoso

Musical notation for Trombon 2, Maestoso, *f*. The piece is in 4/4 time. The first staff begins with a treble clef and a key signature of one sharp (F#). The music starts with a forte (*f*) dynamic. The notation includes eighth and quarter notes, with some rests and a final sharp sign at the end of the second staff.

Nr. 2. Andante Fligh.

Toti

Musical notation for Nr. 2. Andante Fligh. *mp*. The piece is in 4/4 time with a key signature of one sharp (F#). The music is marked *mp* (mezzo-piano). The notation features chords and moving lines, ending with a double bar line.

Nr. 3. Maestoso Fligh.

Musical notation for Nr. 3. Maestoso Fligh. *mp*. The piece is in 4/4 time with a key signature of one sharp (F#). The music is marked *mp*. The notation includes eighth and quarter notes, with a double bar line in the middle.

Toti

Musical notation for Nr. 3. Maestoso Fligh. *mp* (continuation). The notation continues with eighth and quarter notes, ending with a double bar line.

Musical notation for Nr. 3. Maestoso Fligh. *mp* (continuation). The notation continues with eighth and quarter notes, ending with a double bar line.

Nr. 4. Vioi

Musical notation for Nr. 4. Vioi *mf*. The piece is in 3/4 time with a key signature of one sharp (F#). The music is marked *mf* (mezzo-forte). The notation includes quarter and eighth notes, with a double bar line.

Musical notation for Nr. 4. Vioi *mf* (continuation). The notation continues with quarter and eighth notes, ending with a double bar line.

SĂ-L LĂUDĂM

Trombon 3.

Arr. Traian Otlăcan

Maestoso



Nr. 2. Andante **Toti**



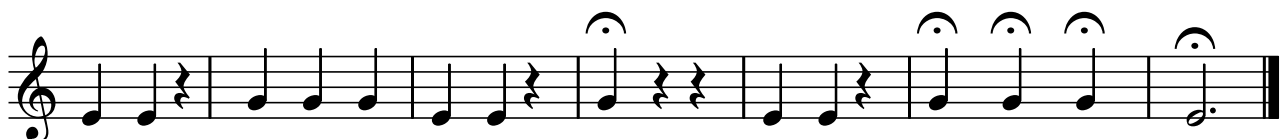
Nr. 3. Maestoso Fligh.



Toti



Nr. 4. Vioi



SĂ-L LĂUDĂM

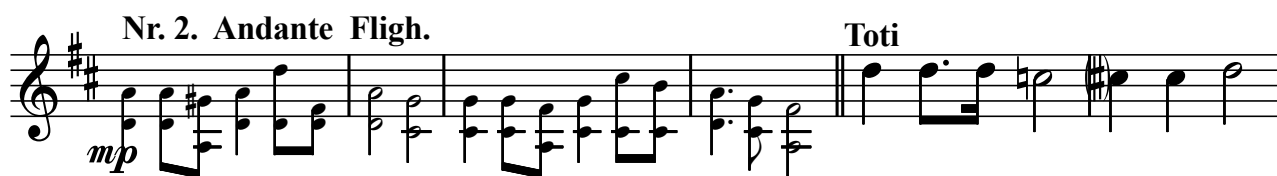
Althorn 1.Eb

Arr. Traian Otlăcan

Maestoso



Nr. 2. Andante Fligh. **Toti**



Nr. 3. Maestoso Fligh.



Toti



Nr. 4. Vioi



SĂ-L LĂUDĂM

Althorn 2.Eb

Arr. Traian Otlăcan

Maestoso

The first section of the music is in 4/4 time, marked **Maestoso** and **f**. It consists of two staves of music. The first staff begins with a treble clef, a key signature of one sharp (F#), and a 4/4 time signature. The melody starts with a quarter note G4, followed by eighth notes A4, B4, C5, D5, E5, and F#5. The second staff continues the melody with eighth notes G5, A5, B5, C6, D6, and E6, ending with a quarter note F#6 and a double bar line.

Nr. 2. Andante Fligh. **Toti**

The second section is marked **Nr. 2. Andante Fligh.** and **Toti**. It is in 4/4 time and starts with a **p** dynamic. The first staff shows a treble clef, a key signature of two sharps (F# and C#), and a melody of quarter notes G4, A4, B4, C5, D5, E5, and F#5. The second staff continues with quarter notes G5, A5, B5, C6, D6, and E6, ending with a quarter note F#6 and a double bar line.

Nr. 3. Maestoso Fligh.

The third section is marked **Nr. 3. Maestoso Fligh.** and starts with a **mp** dynamic. It is in 4/4 time. The first staff shows a treble clef, a key signature of two sharps (F# and C#), and a melody of quarter notes G4, A4, B4, C5, D5, and E5. The second staff continues with quarter notes F#5, G5, A5, B5, C6, and D6, ending with a quarter note E6 and a double bar line.

Toti

The fourth section is marked **Toti** and is in 4/4 time. The first staff shows a treble clef, a key signature of one sharp (F#), and a melody of quarter notes G4, A4, B4, C5, D5, and E5. The second staff continues with quarter notes F#5, G5, A5, B5, C6, and D6, ending with a quarter note E6 and a double bar line.

Nr. 4. Vioi

The fifth section is marked **Nr. 4. Vioi** and starts with a **mf** dynamic. It is in 3/4 time. The first staff shows a treble clef, a key signature of one sharp (F#), and a melody of quarter notes G4, A4, B4, C5, D5, and E5. The second staff continues with quarter notes F#5, G5, A5, B5, C6, and D6, ending with a quarter note E6 and a double bar line.

The sixth section is in 4/4 time. The first staff shows a treble clef, a key signature of one sharp (F#), and a melody of quarter notes G4, A4, B4, C5, D5, and E5. The second staff continues with quarter notes F#5, G5, A5, B5, C6, and D6, ending with a quarter note E6 and a double bar line.

SĂ-L LĂUDĂM

Althorn 3.Eb

Arr. Traian Otlăcan

Maestoso

Musical notation for the first piece, Maestoso, in 4/4 time, marked *f*. The piece consists of two staves of music. The first staff begins with a treble clef, a key signature of one sharp (F#), and a 4/4 time signature. The melody starts with a quarter note G4, followed by a dotted quarter note A4, and then a series of eighth notes: B4, C5, D5, E5, F#5, G5, A5, B5. The second staff continues the melody with a quarter note G5, a dotted quarter note F#5, and then a series of eighth notes: E5, D5, C5, B4, A4, G4, F#4, E4. The piece ends with a double bar line and a key signature change to two sharps (F# and C#).

Nr. 2. Andante Fligh.

Toti

Musical notation for the second piece, Nr. 2. Andante Fligh., marked *p*. The piece consists of two staves of music. The first staff begins with a treble clef, a key signature of two sharps (F# and C#), and a 4/4 time signature. The melody starts with a quarter note G4, followed by a dotted quarter note A4, and then a series of eighth notes: B4, C5, D5, E5, F#5, G5, A5, B5. The second staff continues the melody with a quarter note G5, a dotted quarter note F#5, and then a series of eighth notes: E5, D5, C5, B4, A4, G4, F#4, E4. The piece ends with a double bar line and a key signature change to two sharps (F# and C#).

Nr. 3. Maestoso Fligh.

Musical notation for the third piece, Nr. 3. Maestoso Fligh., marked *mp*. The piece consists of two staves of music. The first staff begins with a treble clef, a key signature of two sharps (F# and C#), and a 4/4 time signature. The melody starts with a quarter note G4, followed by a dotted quarter note A4, and then a series of eighth notes: B4, C5, D5, E5, F#5, G5, A5, B5. The second staff continues the melody with a quarter note G5, a dotted quarter note F#5, and then a series of eighth notes: E5, D5, C5, B4, A4, G4, F#4, E4. The piece ends with a double bar line and a key signature change to two sharps (F# and C#).

Toti

Musical notation for the fourth piece, Nr. 4. Vioi, marked *mf*. The piece consists of two staves of music. The first staff begins with a treble clef, a key signature of one sharp (F#), and a 4/4 time signature. The melody starts with a quarter note G4, followed by a dotted quarter note A4, and then a series of eighth notes: B4, C5, D5, E5, F#5, G5, A5, B5. The second staff continues the melody with a quarter note G5, a dotted quarter note F#5, and then a series of eighth notes: E5, D5, C5, B4, A4, G4, F#4, E4. The piece ends with a double bar line and a key signature change to two sharps (F# and C#).

Nr. 4. Vioi

Musical notation for the fifth piece, Nr. 4. Vioi, marked *mf*. The piece consists of two staves of music. The first staff begins with a treble clef, a key signature of one sharp (F#), and a 3/4 time signature. The melody starts with a quarter note G4, followed by a dotted quarter note A4, and then a series of eighth notes: B4, C5, D5, E5, F#5, G5, A5, B5. The second staff continues the melody with a quarter note G5, a dotted quarter note F#5, and then a series of eighth notes: E5, D5, C5, B4, A4, G4, F#4, E4. The piece ends with a double bar line and a key signature change to two sharps (F# and C#).

SĂ-L LĂUDĂM

Corn Fa

Arr. Traian Otlăcan

Maestoso



Nr. 2. Andante Fligh. **Toti**



Nr. 3. Maestoso Fligh.



Toti



Nr. 4. Vioi

