

# CUM STRIGĂ UN CERB

## Flighorn 1.

Arr. Traian Otlăcan

**Andante**

*mp*

*f* *mp*

**Duet Tenori**

*mp*

**Fligh.**

*mf* *mp*

**Nr. 2. Moderato** *Doamne, slavă-Ţi se cuvine*

*mp*

**Tenori**

*p*

**Fligh.**

*mf*

# CUM STRIGĂ UN CERB

Flighorn 2.

Arr. Traian Otlăcan

Andante

*mp*

*f* *mp*

Duet Tenori

*mp*

Fligh.

*mf* *mp*

Nr. 2. Moderato Doamne, slavă-Ţi se cuvine

*mp*

Tenori

*p*

Fligh.

*mf*

# CUM STRIGĂ UN CERB

Flaut Do 1.

Arr. Traian Otlăcan

**Andante**

*mp*

*f* *mp*

**Duet Tenori**

*mp*

**Fligh.**

*mf* *mp*

**Nr. 2. Moderato** *Doamne, slavă-Ți se cuvine*

*mp*

**Tenori**

*p*

**Fligh.**

*mf*

# CUM STRIGĂ UN CERB

Flaut Do 2.

Arr. Traian Otlăcan

**Andante**

*mp*

*f* *mp*

**Duet Tenori**

*mp*

**Fligh.**

*mf* *mp*

**Nr. 2. Moderato** *Doamne, slavă-Ți se cuvine*

*mp*

**Tenori**

*p*

**Fligh.**

*mf*

# CUM STRIGĂ UN CERB

Clarinet 1.Bb

Arr. Traian Otlăcan

Andante

*mp*

*f* *mp*

Duet Tenori

Fligh.

*mf* *mp*

Nr. 2. Moderato

Doamne, slavă-Ți se cuvine

*mp*

Tenori

*p*

Fligh.

*mf*

# CUM STRIGĂ UN CERB

Clarinet 2.Bb

Arr. Traian Otlăcan

Andante

*mp*

*f* *mp*

Tenori

*mp*

Fligh.

*mf* *mp*

Nr. 2. Moderato *Doamne, slavă-Ți se cuvine*

*mp*

Tenori

*p*

Fligh.

*mf*

# CUM STRIGĂ UN CERB

Saxofon Eb

Arr. Traian Otlăcan

Andante

*mp*

*f* *mp*

Duet Tenori

*mp*

Fligh.

*mf* *mp*

Nr. 2. Moderato Doamne, slavă-Ți se cuvine

*mp*

Tenori

*p*

Fligh.

*mf*

# CUM STRIGĂ UN CERB

Basflighorn

Arr. Traian Otlăcan

Andante

*mp*

*f* *mp*

Tenori

*mp*

Fligh.

*mf* *mp*

Nr. 2. Moderato *Doamne, slavă-Ți se cuvine*

*mp*

Tenori

*mf*

Fligh.

*mf*



# CUM STRIGĂ UN CERB

## Euphonium

Arr. Traian Otlăcan

**Andante**

*mp*

*f* *mp*

**Tenori**

*mp*

**Fligh.**

*mf* *mp*

**Nr. 2. Moderato** *Doamne, slavă-Ți se cuvine*

*mp*

**Tenori**

*mf*

**Fligh.**

*mf*

# CUM STRIGĂ UN CERB

Bass Bb

Arr. Traian Otlăcan

Andante



Tenori



Fligh.



Nr. 2. Moderato



Tenori



Fligh.



# CUM STRIGĂ UN CERB

Bass Fa

Arr. Traian Otlăcan

Andante

*mp*

*f mp*

Tenori

*mp*

Fligh.

*mf mp*

Nr. 2. Moderato

*mp*

Tenori

*p*

Fligh.

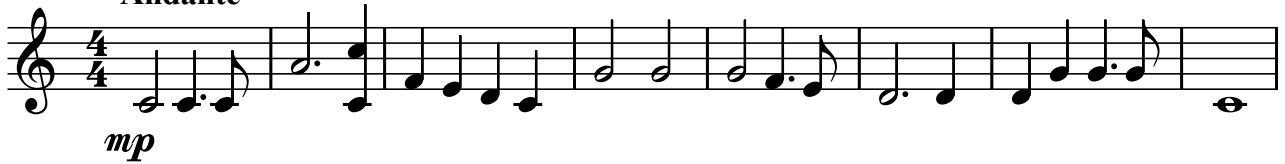
*mf*

# CUM STRIGĂ UN CERB

Bass Eb

Arr. Traian Otlăcan

Andante



Tenori



Fligh.



Nr. 2. Moderato



Tenori



Fligh.



# CUM STRIGĂ UN CERB

## Trombon 1.

Arr. Traian Otlăcan

**Andante**

*mp*

*f* *mp*

**Tenori**

*mp*

**Fligh.**

*mf* *mp*

**Nr. 2. Moderato**

*mp*

**Tenori**

*p*

**Fligh.**

*mf*

# CUM STRIGĂ UN CERB

**Trombon 2.**

Arr. Traian Otlăcan

**Andante**  
*mp*



*f* *mp*



**Tenori**  
*mp*



**Fligh.**  
*mf* *mp*



**Nr. 2. Moderato**  
*mp*



**Tenori**  
*p*



**Fligh.**  
*mf*



# CUM STRIGĂ UN CERB

## Trombon 3.

Arr. Traian Otlăcan

**Andante**

*mp*

*f* *mp*

**Tenori**

*mp*

**Fligh.**

*mf* *mp*

**Nr. 2. Moderato**

*mp*

**Tenori**

*p*

**Fligh.**

*mf*

# CUM STRIGĂ UN CERB

Althorn 1.Eb

Arr. Traian Otlăcan

Andante

*mp*

*f*

Tenori

*mp*

8

Fligh.

*mf*

$\frac{3}{4}$

Nr. 2. Moderato

*mp*

Tenori

*p*

Fligh.

*Fligh.*



# CUM STRIGĂ UN CERB

Althorn 2.Eb

Arr. Traian Otlăcan

Andante

*mp*

*f* *mp*

Tenori

*mp* 8 *Fligh.* *mf*

*mp*  $\frac{3}{4}$

Nr. 2. Moderato

*mp*

Tenori

*p*

Fligh.

*Fligh.*

# CUM STRIGĂ UN CERB

Althorn 3.Eb

Arr. Traian Otlăcan

**Andante**

The first movement is in 4/4 time, marked Andante. It consists of two staves of music. The first staff begins with a mezzo-piano (*mp*) dynamic. The second staff features a dynamic change to forte (*f*) and then returns to mezzo-piano (*mp*). The key signature has one flat (B-flat).

**Tenori**

The Tenors part for the first movement is marked mezzo-piano (*mp*) and includes an 8-measure rest. It then resumes with a mezzo-forte (*mf*) dynamic. The key signature has one flat.

**Nr. 2. Moderato**

The second movement is in 3/4 time, marked Moderato. It begins with a mezzo-piano (*mp*) dynamic. The key signature has one flat.

**Tenori**

The Tenors part for the second movement begins with a piano (*p*) dynamic. The key signature has one flat.

**Fligh.**

The Flights part for the second movement is marked Fligh. and begins with a piano (*p*) dynamic. The key signature has one flat.

# CUM STRIGĂ UN CERB

Corn Fa

Arr. Traian Otlăcan

Andante

*mp*

*f*

Tenori

8

Fligh.

*mp* *mf*

Nr. 2. Moderato

*mp*

Tenori

*p*

Fligh.